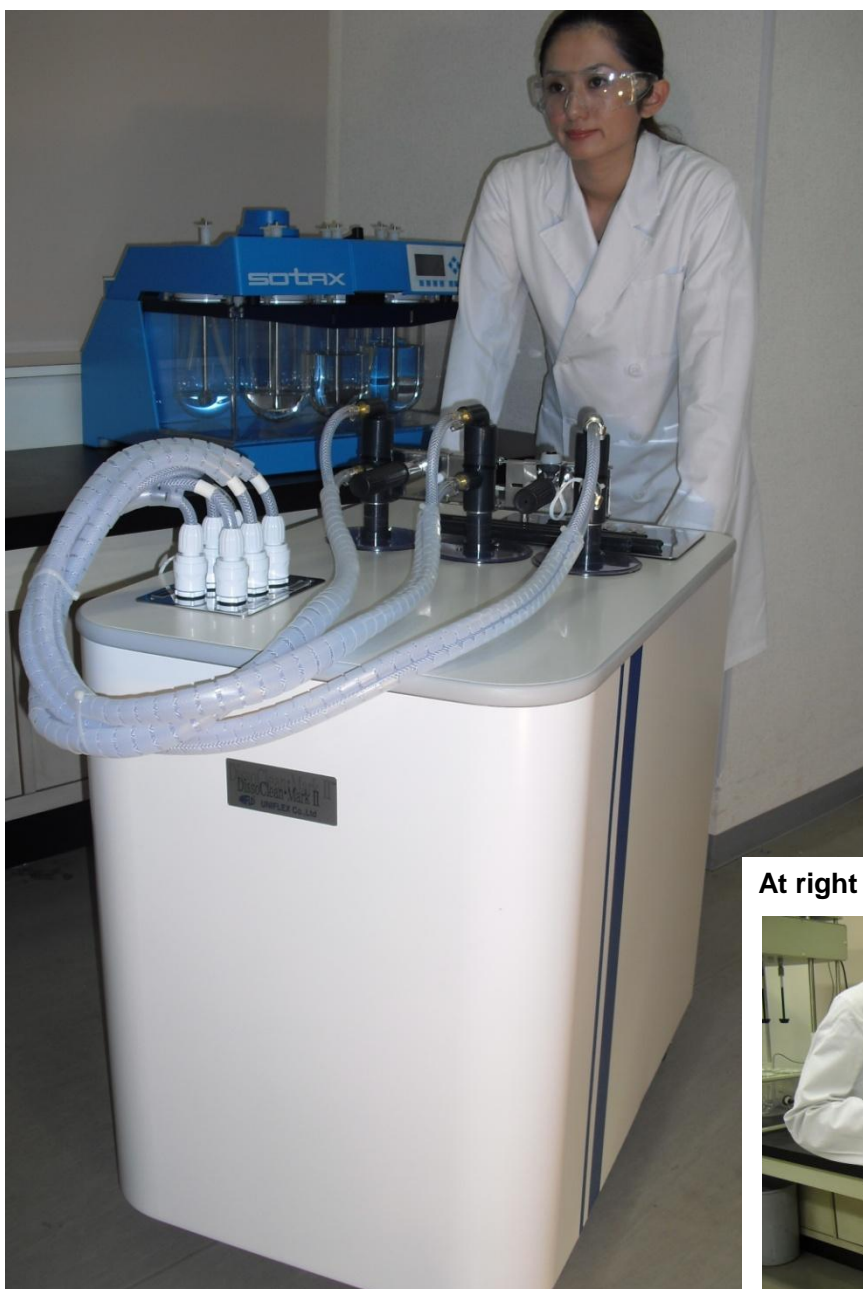


DissoClean•Mark II

High-Performance, Multi-Channel Dissolution Vessel Washer

Dissolution vessel clean-up is a tedious and time consuming task but one that is critical for quality control and drug discovery. Customers employing Uniflex's **fully-mobile, in-place multi-vessel washer** essentially eliminate the need to remove, drain, clean and reposition dissolution vessels.

Patent Pending



Nozzle assembly may be used
In-line, or



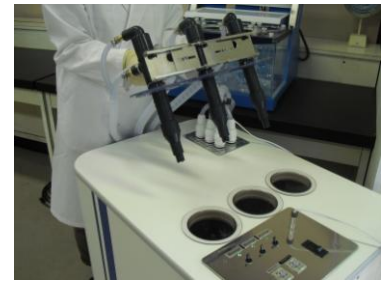
At right angles for special washing needs



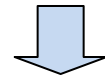
DissoClean • Mark II

DissoClean • Mark II

Easy Operation



1. Insert Nozzles into Vessels



2. Turn on Main Switch to Evacuate Spent Media



3. Press Wash Cycle Button Once for Automatic Wash and Drain

Improved Productivity and Efficiency

- In-place vessel clean-up
- Washed 6 vessels in just 1 minute
- Repositioning validation no longer required
- 3-nozzle washer assembly
- Adjust for in-line or right angle use
- Nozzles operate simultaneously or independently

DissoClean • Mark II

DissoClean • Mark II



Electronically Controlled Wash/Drain Cycle

Operate Nozzles Simultaneously or Individually

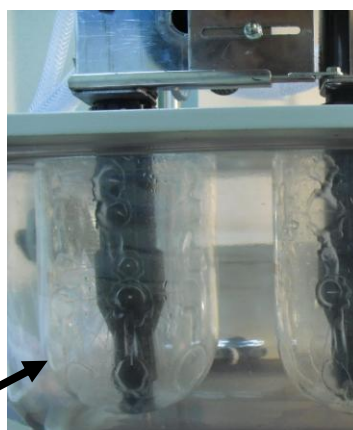


Fits All Tester Vessels
Regardless of Manufacturer

Quick Release Connectors



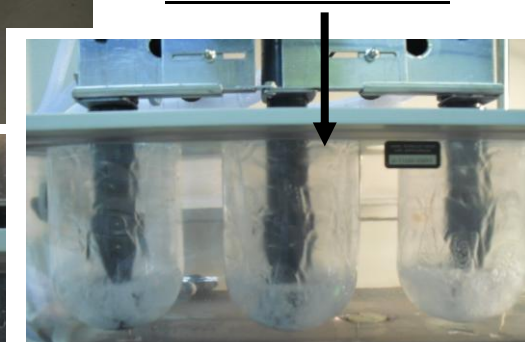
*0.5 sec. after beginning wash



Clean up to 96 vessels before refilling the 55 liter wash tank and emptying the waste tank.

Electronic level sensors prevent overflow and overflow.

*2 seconds after start



In-Place Washing

1. Makes cleaning qualification possible
2. Minimizes vessel breakage and subsequent recalibration

Provides Optimum Wash

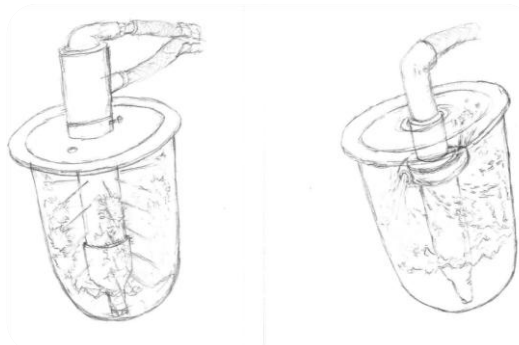
High pressure diaphragm pumps exert 45psi through strategically placed jet ports to provide an optimum, 360 degree wash quality. Stubborn surfactants easily washed away

DissoClean • Mark II

DissoClean • Mark II

Main Features

1. In-Place Clean-up
2. Washes 6 Vessels in 1 Minute
3. Qualification Documents Available
4. Nozzles Operate Simultaneously or Independently
5. Fits All Dissolution Vessel
6. Fully Mobile



Direct Injection Wash

High pressure diaphragm pumps exert 45psi of pressure through strategically placed nozzle jet ports to provide optimum, 360 degree wash quality. Even stubborn surfactants are easily washed away. Unlike sprinkler type washers, where the strength of the spray is reduced with the rotation of the nozzle, the DissoClean Mark I spray remains constant throughout the wash cycle.



Mark II Specifications

Electrical Power: 100-240V / 50-60Hz 10A

Dimensions: 22"(w) x 31"(d) x 31(h)
(W55cm / D79cm / H79.5cm)

Weight: 95kg -full (Approx. 210lbs)

Ceramic Top

Tanks: 2 x 55 liters (14.5gal)

Vessels Washed Per Tank: 96 vessels at 4sec

Injection Volume: Approximately 140ml/sec

Recommended Washing Time: 4sec

Recommended Drainage Time: 11sec

Recommended Normal Wash: Once

Recommended Surfactant Wash: 3-4times

Options:

Safety Switch: At Lid Center

Heater: 100V 15A

Liquid Waste Neutralization: No Bubbles

Customization: Possible



Ver.2012J17E



 **Manufacturer**
UNIFLEX Company Ltd.

2F VERDE GRANDE 1-1-1 KITAKASHIWA
KASHIWA-CITY CHIBA 277-0832 JAPAN
PHONE: +81-4-7160-2721 FAX: +81-4-7160-2725

KASHIWA TECHNICAL & SERVICE CENTER
PHONE: +81-4-7160-2721 FAX: +81-4-7160-2725
OSAKA BRANCH
PHONE: +81-6-6323-8344 FAX: +81-6-6323-8257

E-mail: info@uniflex.co.jp URL: http://www.uniflex.co.jp